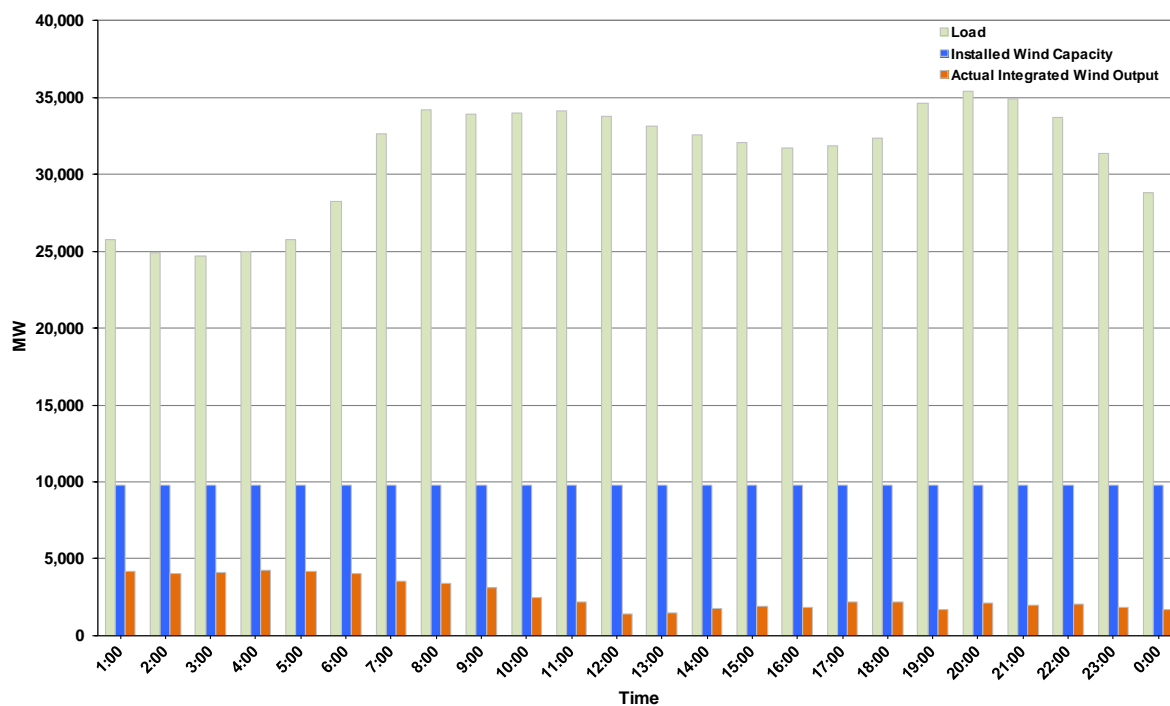




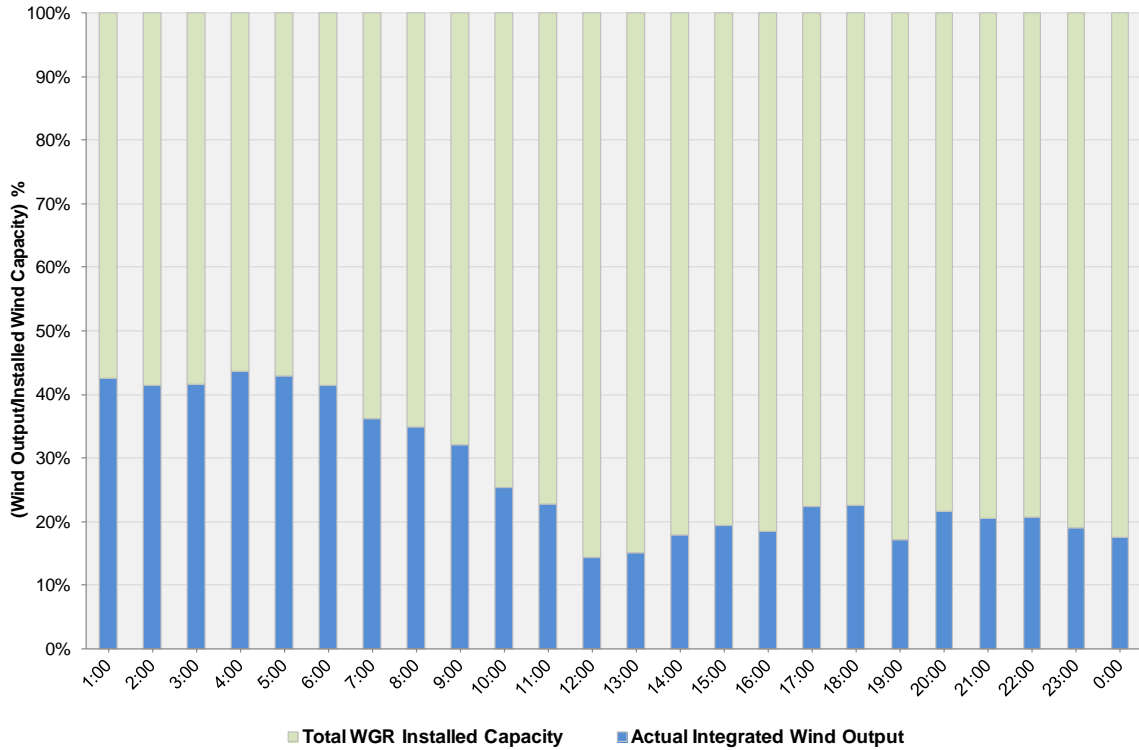
ERCOT Grid Operations Wind Integration Report: 02/16/12

Peak Load	35,365 MW
Load Peak Hour (HE)	20
Wind over Peak	2,117 MW
Wind Record 10/07/11	7,400 MW
Max Wind Value	4,472 MW
Wind Peak Time	03:58
Wind Integration %	17.77%

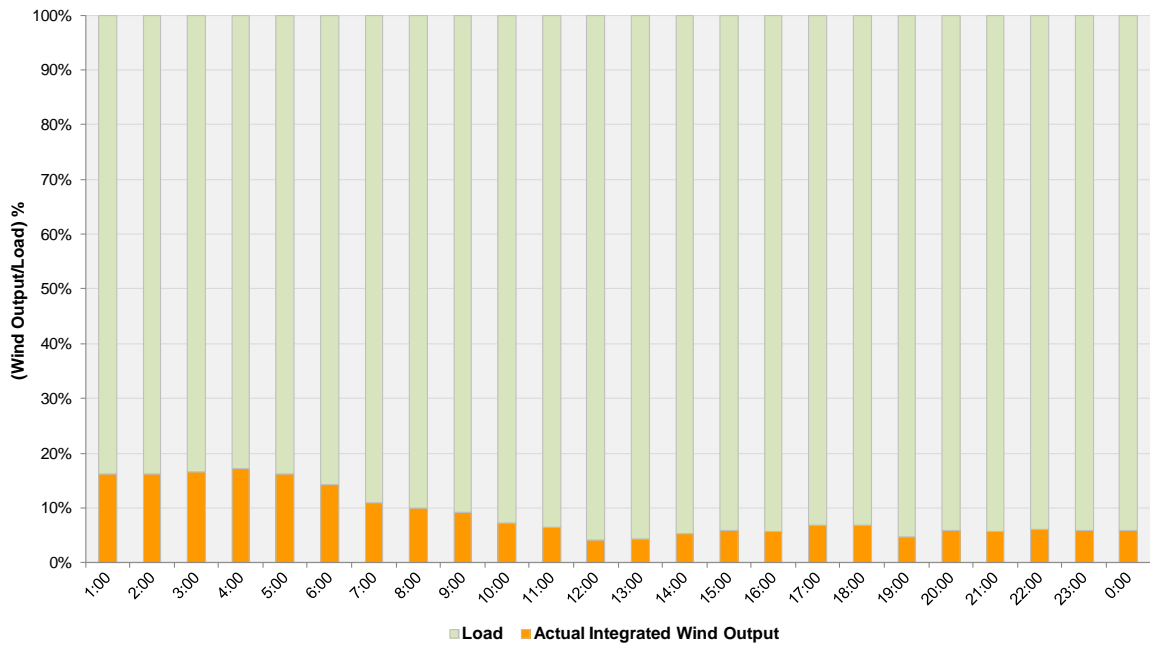
**Hourly Average Actual Load vs. Actual Wind Output
02-16-2012**



Actual Wind Output as a Percentage of the Total Installed Wind Capacity
02-16-2012



Actual Wind Output as a Percentage of the ERCOT Load
02-16-2012



ERCOT Load vs. Actual Wind Output 2/9/2012 - 2/16/2012

